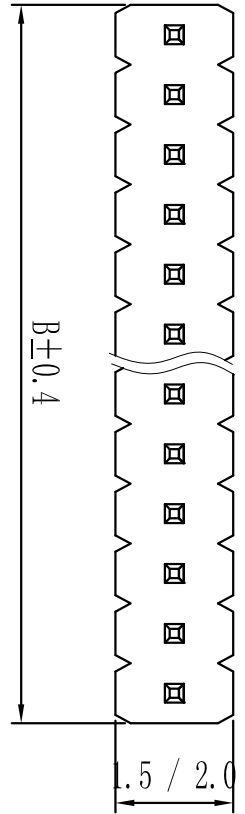
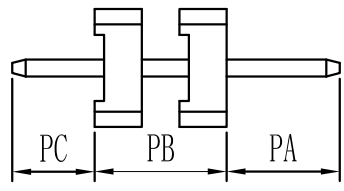
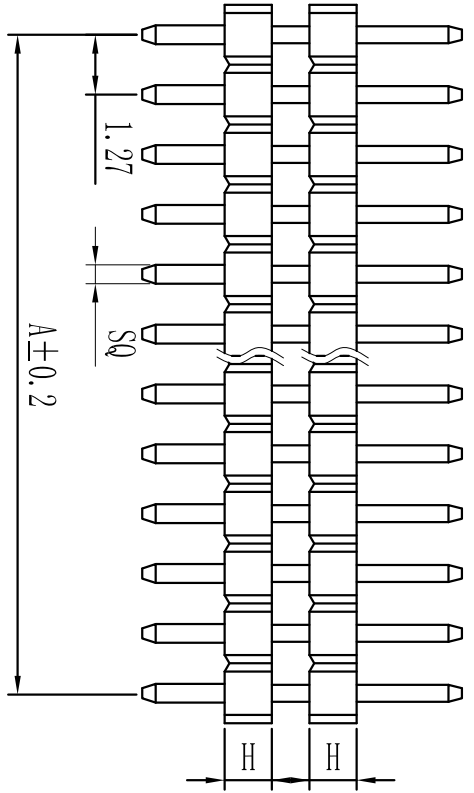


ROHS



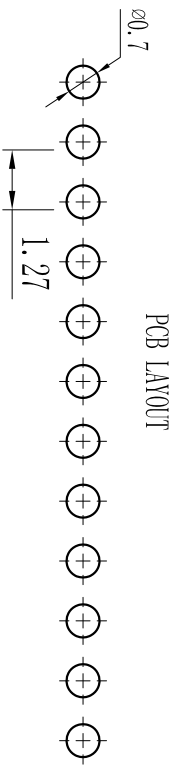
SQ
0.40
0.46



Height
H=0.65mm, 1.0mm, 1.5mm, 1.7mm, 2.0mm, 2.5mm

Specification:
 Current Rating : 1AMP
 Temperature Range : -40°C to +105°C
 Contact Resistance : 20mΩ Max
 Insulation Resistance : 1000MΩ Min
 Withstanding Voltage : AC 500V
 Material:
 Insulator : Polyester (UL94V-0)
 Standard: PBT/PA6T/LCP
 Contact: Brass
 Plating : Au or Sn Over 50u" Ni

Pin No.	Length	Height
1x1	-	1.27
1x2	1.27	2.54
1x3	2.54	3.81
1x4	3.81	5.08
1x5	5.08	6.35
1x6	6.35	7.62
1x7	7.62	8.89
1x8	8.89	10.16
1x9	10.16	11.43
1x10	11.43	12.70
1x11	12.70	13.97
1x12	13.97	15.24
1x13	15.24	16.51
1x14	16.51	17.78
1x15	17.78	19.05
1x16	19.05	20.32
1x17	20.32	21.59
1x18	21.59	22.86
1x19	22.86	24.13
1x20	24.13	25.40
1x21	25.40	26.67
1x22	26.67	27.94
1x23	27.94	29.21
1x24	29.21	30.48
1x25	30.48	31.75
1x26	31.75	33.02
1x27	33.02	34.29
1x28	34.29	35.56
1x29	35.56	36.83
1x30	36.83	38.10
1x31	38.10	39.37
1x32	39.37	40.64
1x33	40.64	41.91
1x34	41.91	43.18
1x35	43.18	44.45
1x36	44.45	45.72
1x37	45.72	46.99
1x38	46.99	48.26
1x39	48.26	49.53
1x40	49.53	50.80
1x41	50.80	52.07
1x42	52.07	53.34
1x43	53.34	54.61
1x44	54.61	55.88
1x45	55.88	57.15
1x46	57.15	58.42
1x47	58.42	59.69
1x48	59.69	60.96
1x49	60.96	62.23
1x50	62.23	63.50



PCB LAYOUT

For reference only

GENERAL TOLERANCES		SCALE: 1:1		NAME		DATE	
LINEAR	ANGLES	APPROVED					
0.0 ± 0.25	X° REF ± 6°						
UNIT: MM	X° ± 3°	DESIGNER					
SIZE: A4	X° X' ± 2°	DRAWN					

深圳市联泰连接器有限公司
 SHENZHEN UNICABLE CONNECTOR CO., LTD.
 公司地址: WWW.SZLSTC.COM
 公司邮箱: SZLSTC@126.COM
 公司电话: 0755-23765650
 公司传真: 0755-23765753

TITLE: Pitch 1.27mm Pin Header, Dual Plastic, Single Row, DIP

PART. NO:	LSPH-0020
DWG. NO:	ENDE0020
REV:	A0
SHEET:	1/1

REV.	1	2	3	4	5	6	7	8
REVISION RECORD								
DATE								
SIZE: A4	0.000 ± 0.08	X°	X' ± 2°					