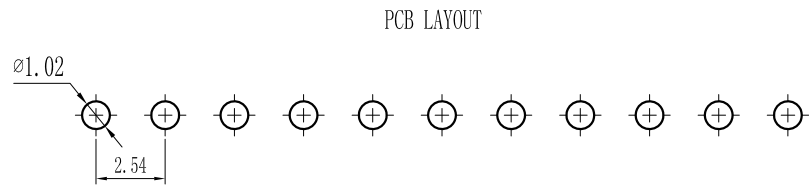
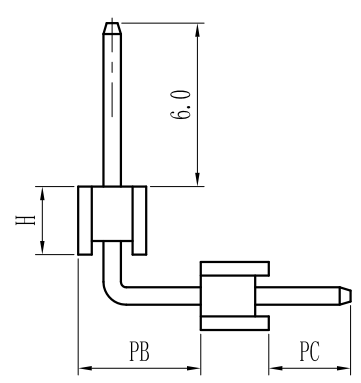
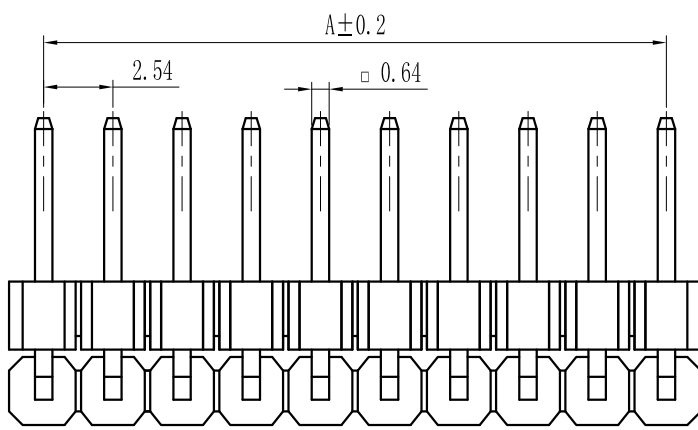
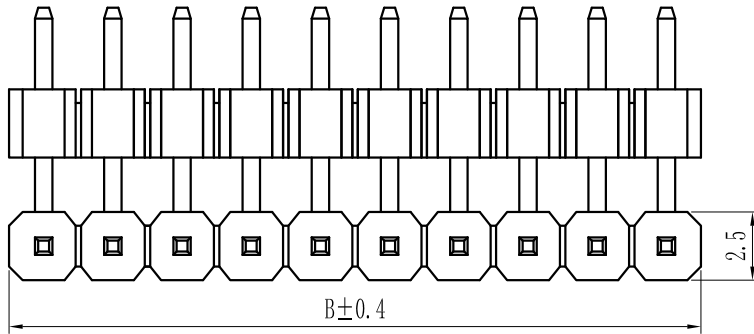


ROHS


For reference only

Pin数	尺寸A	尺寸B
1x1	-	2.54
1x2	2.54	5.08
1x3	5.08	7.62
1x4	7.62	10.16
1x5	10.16	12.70
1x6	12.70	15.24
1x7	15.24	17.78
1x8	17.78	20.32
1x9	20.32	22.86
1x10	22.86	25.40
1x11	25.40	27.94
1x12	27.94	30.48
1x13	30.48	33.02
1x14	33.02	35.56
1x15	35.56	38.10
1x16	38.10	40.64
1x17	40.64	43.18
1x18	43.18	45.72
1x19	45.72	48.26
1x20	48.26	50.80
1x21	50.80	53.34
1x22	53.34	55.88
1x23	55.88	58.42
1x24	58.42	60.96
1x25	60.96	63.50
1x26	63.50	66.04
1x27	66.04	68.58
1x28	68.58	71.12
1x29	71.12	73.66
1x30	73.66	76.20
1x31	76.20	78.74
1x32	78.74	81.28
1x33	81.28	83.82
1x34	83.82	86.36
1x35	86.36	88.90
1x36	88.90	91.44
1x37	91.44	93.98
1x38	93.98	96.52
1x39	96.52	99.06
1x40	99.06	101.60



Specification:
 Current Rating : 3.0AMP
 Temperature Range : -40°Cto+105°C
 Contact Resistance : 20mΩ Max
 Insulation Resistance : 1000MΩ Min
 Withstanding Voltage : AC 1000V
 Material:
 Insulator : Polyester (UL94V-0)
 Standard:PBT/PA6T/LCP
 Contact: Brass
 Plating : Au or Sn Over 50u" Ni

Height
H=1.0mm, 1.5mm, 1.7mm, 2.0mm, 2.5mm, 3.3mm

REV.	REVISION RECORD	DATE	UNIT: MM	GENERAL TOLERANCES		SCALE: 1:1	NAME	DATE	 深圳市联索连接器有限公司 SHENZHEN UNICABLE CONNECTOR CO., LTD. 公司网址WWW.SZLSTC.CN 公司电话0755-23765650 公司邮箱SZLSTC@126.COM 公司传真0755-23765753	PART. NO:	
				0.00±0.15	X° ±3°					APPROVED	LSPH-0093
				0.00±0.08	X° X'±2°					DESIGNER	DWG. NO:
				0.00±0.25	X° REF±6°					DRAWN	ENDE0093
				SIZE: A4				TITLE:	REV: AO	SHEET: 1/1	
								Pitch2.54mm Pin Header, Dual Plastic, Single Row, Right Angle Type			