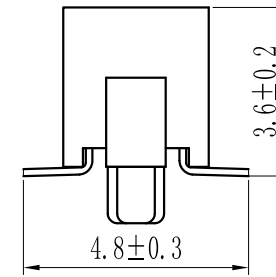
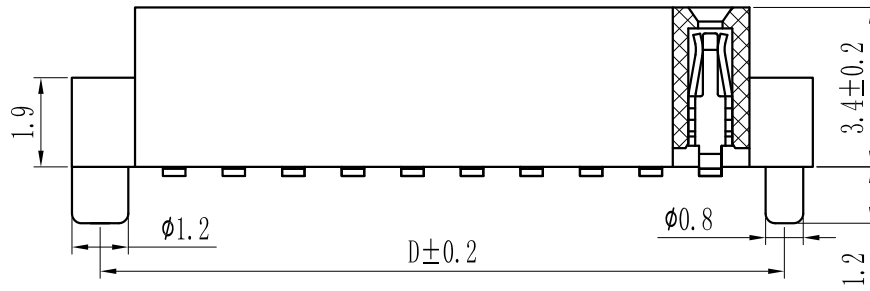
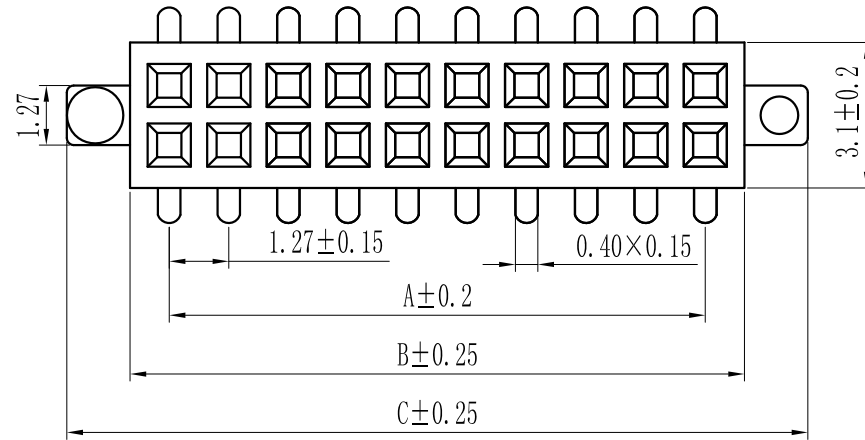


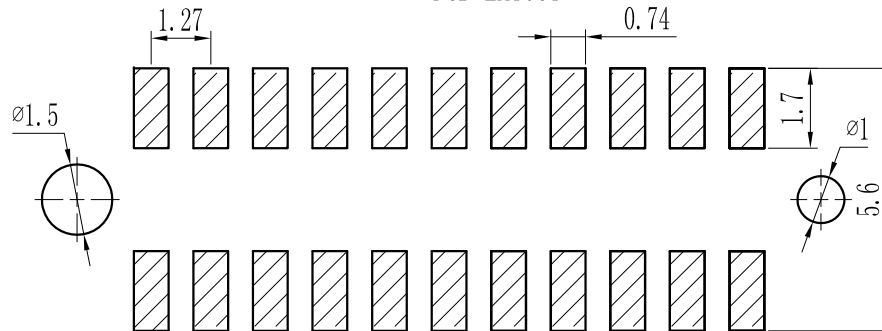
ROHS

For reference only

| Pin数 | 尺寸A | 尺寸B | 尺寸C | 尺寸D |
|------|-------|-------|-------|-------|
| 2x2 | 1.27 | 2.94 | 5.64 | 4.43 |
| 2x3 | 2.54 | 4.21 | 6.91 | 5.70 |
| 2x4 | 3.81 | 5.48 | 8.18 | 6.97 |
| 2x5 | 5.08 | 6.75 | 9.45 | 8.24 |
| 2x6 | 6.35 | 8.02 | 10.72 | 9.51 |
| 2x7 | 7.62 | 9.29 | 11.99 | 10.78 |
| 2x8 | 8.89 | 10.56 | 13.26 | 12.05 |
| 2x9 | 10.16 | 11.83 | 14.53 | 13.32 |
| 2x10 | 11.43 | 13.10 | 15.80 | 14.59 |
| 2x11 | 12.70 | 14.37 | 17.07 | 15.86 |
| 2x12 | 13.97 | 15.64 | 18.34 | 17.13 |
| 2x13 | 15.24 | 16.91 | 19.61 | 18.40 |
| 2x14 | 16.51 | 18.18 | 20.88 | 19.67 |
| 2x15 | 17.78 | 19.45 | 22.15 | 20.94 |
| 2x16 | 19.05 | 20.72 | 23.42 | 22.21 |
| 2x17 | 20.32 | 21.99 | 24.69 | 23.48 |
| 2x18 | 21.59 | 23.26 | 25.96 | 24.75 |
| 2x19 | 22.86 | 24.53 | 27.23 | 26.02 |
| 2x20 | 24.13 | 25.80 | 28.50 | 27.29 |
| 2x21 | 25.40 | 27.07 | 29.77 | 28.56 |
| 2x22 | 26.67 | 28.34 | 31.04 | 29.83 |
| 2x23 | 27.94 | 29.61 | 32.31 | 31.10 |
| 2x24 | 29.21 | 30.88 | 33.58 | 32.37 |
| 2x25 | 30.48 | 32.15 | 34.85 | 33.64 |
| 2x26 | 31.75 | 33.42 | 36.12 | 34.91 |
| 2x27 | 33.02 | 34.69 | 37.39 | 36.18 |
| 2x28 | 34.29 | 35.96 | 38.66 | 37.45 |
| 2x29 | 35.56 | 37.23 | 39.93 | 38.72 |
| 2x30 | 36.83 | 38.50 | 41.20 | 39.99 |
| 2x31 | 38.10 | 39.77 | 42.47 | 41.26 |
| 2x32 | 39.37 | 41.04 | 43.74 | 42.53 |
| 2x33 | 40.64 | 42.31 | 45.01 | 43.80 |
| 2x34 | 41.91 | 43.58 | 46.28 | 45.07 |
| 2x35 | 43.18 | 44.85 | 47.55 | 46.34 |
| 2x36 | 44.45 | 46.12 | 48.82 | 47.61 |
| 2x37 | 45.72 | 47.39 | 50.09 | 48.88 |
| 2x38 | 46.99 | 48.66 | 51.36 | 50.15 |
| 2x39 | 48.26 | 49.93 | 52.63 | 51.42 |
| 2x40 | 49.53 | 51.20 | 53.90 | 52.69 |
| 2x41 | 50.80 | 52.47 | 55.17 | 53.96 |
| 2x42 | 52.07 | 53.74 | 56.44 | 55.23 |
| 2x43 | 53.34 | 55.01 | 57.71 | 56.50 |
| 2x44 | 54.61 | 56.28 | 58.98 | 57.77 |
| 2x45 | 55.88 | 57.55 | 60.25 | 59.04 |
| 2x46 | 57.15 | 58.82 | 61.52 | 60.31 |
| 2x47 | 58.42 | 60.09 | 62.79 | 61.58 |
| 2x48 | 59.69 | 61.36 | 64.06 | 62.85 |
| 2x49 | 60.96 | 62.63 | 65.33 | 64.12 |
| 2x50 | 62.23 | 63.90 | 66.60 | 65.39 |



PCB LAYOUT



Specification:
 Current Rating : 1AMP
 Temperature Range : -40°Cto+105°C
 Contact Resistance : 20mΩ Max
 Insulation Resistance : 1000MΩ Min
 Withstanding Voltage : AC 500V
 Material:
 Insulator : Polyester (UL94V-0)
 Standard:PBT/PA6T/LCP
 Contact: Bronze
 Plating : Au or Sn Over 50u" Ni

| | | | | | | | | | | | | |
|---|------|-----------------|--|--------------------|-----------|------------|--------|-------|--|-----------|--|----|
| H | | | | GENERAL TOLERANCES | | SCALE: 1:1 | NAME | DATE | 深圳市联索连接器有限公司 SHENZHEN UNICABLE CONNECTOR CO., LTD. 公司地址WWW.SZLSTC.CN 公司电话0755-23765650 公司邮箱SZLSTC@126.COM 公司传真0755-23765753 | PART. NO: | LSFH-0033 | |
| | | | | LINEAR | ANGLES | APPROVED | | | | DWG. NO: | ENDE1033 | |
| | | | | 0.00±0.25 | X° REF±6° | DESIGNER | | | | TITLE: | Pitch1.27mm Female Header, Dual Row, Plastic Height 3.4mm, SMT with Local Peg Type(U) | |
| | REV. | REVISION RECORD | | DATE | UNIT: MM | 0.00±0.15 | X° ±3° | DRAWN | | | REV: | AO |