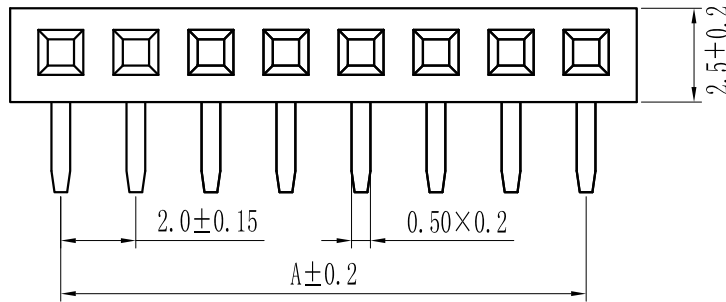


ROHS

For reference only

Pin数	尺寸A	尺寸B
1×2	2.0	4.5
1×3	4.0	6.5
1×4	6.0	8.5
1×5	8.0	10.5
1×6	10.0	12.5
1×7	12.0	14.5
1×8	14.0	16.5
1×9	16.0	18.5
1×10	18.0	20.5
1×11	20.0	22.5
1×12	22.0	24.5
1×13	24.0	26.5
1×14	26.0	28.5
1×15	28.0	30.5
1×16	30.0	32.5
1×17	32.0	34.5
1×18	34.0	36.5
1×19	36.0	38.5
1×20	38.0	40.5
1×21	40.0	42.5
1×22	42.0	44.5
1×23	44.0	46.5
1×24	46.0	48.5
1×25	48.0	50.5
1×26	50.0	52.5
1×27	52.0	54.5
1×28	54.0	56.5
1×29	56.0	58.5
1×30	58.0	60.5
1×31	60.0	62.5
1×32	62.0	64.5
1×33	64.0	66.5
1×34	66.0	68.5
1×35	68.0	70.5
1×36	70.0	72.5
1×37	72.0	74.5
1×38	74.0	76.5
1×39	76.0	78.5
1×40	78.0	80.5

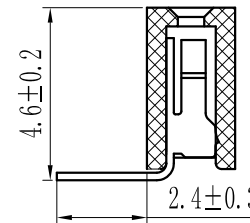
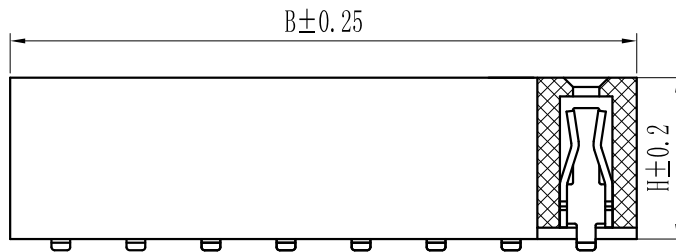


H
4.0
4.3
4.6

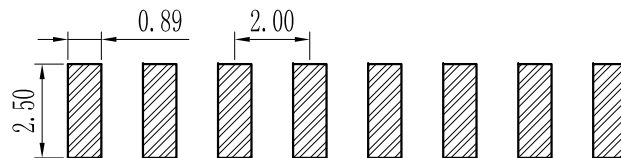
Specification:
 Current Rating : 1.5AMP
 Temperature Range : -40°Cto+105°C
 Contact Resistance : 20mΩ Max
 Insulation Resistance : 1000MΩ Min
 Withstanding Voltage : AC 500V
 Material:

Insulator : Polyester (UL94V-0)
 Standard:PA6T/LCP

Contact: Bronze
 Plating : Au or Sn Over 50u" Ni



PCB LAYOUT



GENERAL TOLERANCES

SCALE:
1:1

NAME

DATE

LINEAR ANGLES

APPROVED

DESIGNER

DRAWN

0.0±0.25 X° REF±6°

0.00±0.15 X° ±3°

0.000±0.08 X° X'±2°

深圳市联索连接器有限公司
SHENZHEN UNICABLE CONNECTOR CO., LTD.

公司网址WWW.SZLSTC.CN 公司电话0755-23765650
公司邮箱SZLSTC@126.COM 公司传真0755-23765753

PART. NO:

LSFH-0075

DWG. NO:

ENDE1075

TITLE:

Pitch2.0mm Female Header, Single Row,
Plastic Height Hmm, SMT Type(U)

REV:

A0

SHEET: 1/1

REVISION RECORD

DATE

UNIT: MM

SIZE: A4

1

2

3

4

5

6

7

8