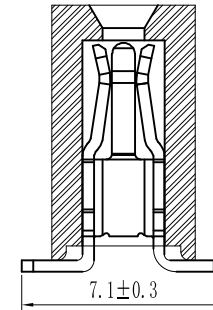
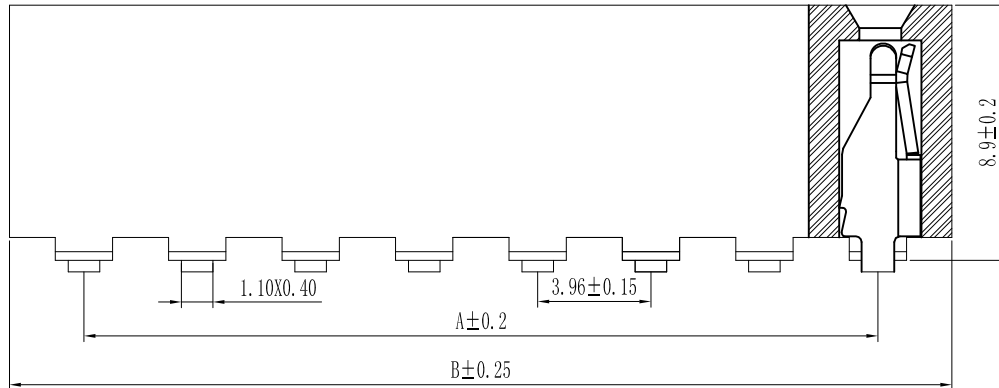
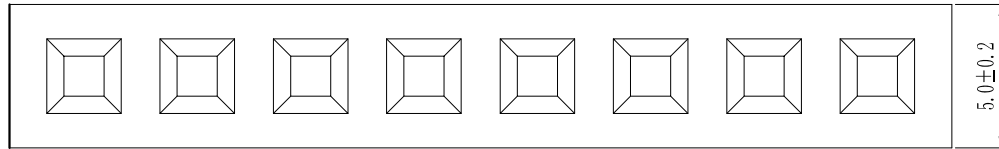


ROHS

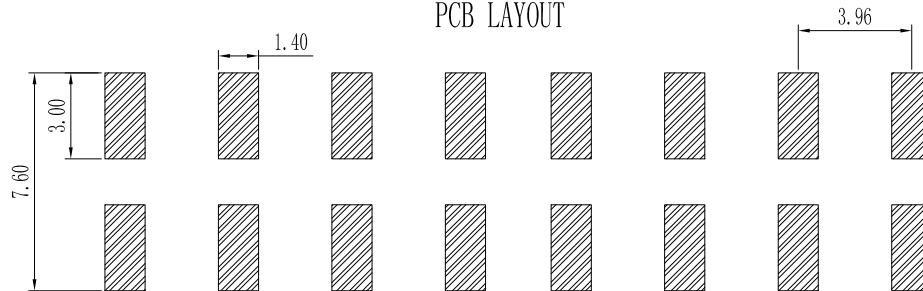
For reference only

Pin数	尺寸A	尺寸B
1×2	3.96	7.92
1×3	7.92	11.88
1×4	11.88	15.84
1×5	15.84	19.80
1×6	19.80	23.76
1×7	23.76	27.72
1×8	27.72	31.68
1×9	31.68	35.64
1×10	35.64	39.60
1×11	39.60	43.56
1×12	43.56	47.52
1×13	47.52	51.48
1×14	51.48	55.44
1×15	55.44	59.40
1×16	59.40	63.36
1×17	63.36	67.32
1×18	67.32	71.28
1×19	71.28	75.24
1×20	75.24	79.20
1×21	79.20	83.16
1×22	83.16	87.12
1×23	87.12	91.08
1×24	91.08	95.04
1×25	95.04	99.00
1×26	99.00	102.96
1×27	102.96	106.92
1×28	106.92	110.88
1×29	110.88	114.84
1×30	114.84	118.80
1×31	118.80	122.76
1×32	122.76	126.72
1×33	126.72	130.68
1×34	130.68	134.64
1×35	134.64	138.60
1×36	138.60	142.56
1×37	142.56	146.52
1×38	146.52	150.48
1×39	150.48	154.44
1×40	154.44	158.40



Specification:  
 Current Rating : 7AMP  
 Temperature Range : -40°Cto+105°C  
 Contact Resistance : 20mΩ Max  
 Insulation Resistance : 1000MΩ Min  
 Withstanding Voltage : AC 500V  
 Material:  
 Insulator : Polyester (UL94V-0)  
 Standard:PA6T/LCP  
 Contact: Bronze  
 Plating : Au or Sn Over 50u" Ni

PCB LAYOUT



GENERAL TOLERANCES

LINEAR	ANGLES
0.0±0.25	X° REF±6°
0.00±0.15	X° ±3°
0.000±0.08	X° X'±2°

SCALE:	NAME	DATE
1:1		
APPROVED		
DESIGNER		
DRAWN		



公司网址WWW.SZLSTC.CN 公司电话0755-23765650  
 公司邮箱SZLSTC@126.COM 公司传真0755-23765753

TITLE:  
 Pitch3.96mm Female Header, Single Row,  
 Plastic Height 8.9mm, SMT Type(U)

PART. NO:	LSFH-0214	
DWG. NO:	ENDE1214	
REV:	AO	SHEET: 1/1

REV.	REVISION RECORD	DATE
1		