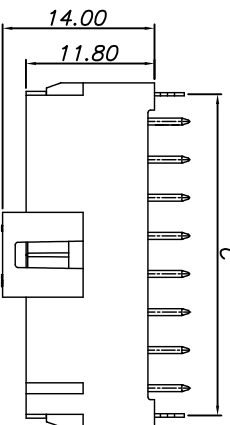


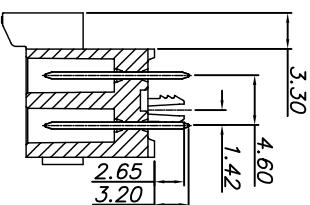
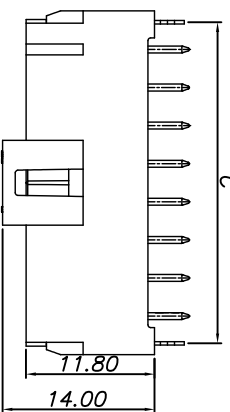
# 环保物料

1 2 3 4 5 6 7 8

43501W00-2XNP\*-B2-\*\*



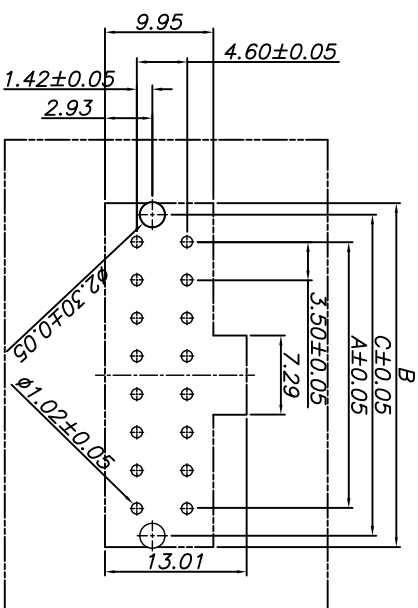
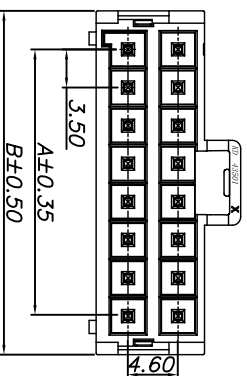
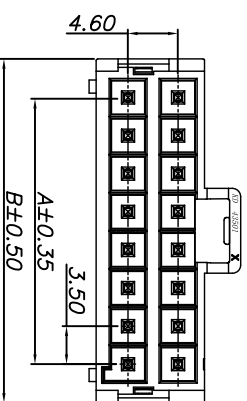
43501W01-2XNP\*-B2-\*\*



Reference Informations:  
 \*Material: Pin: Brass  
 Wafer: LCP, UL94V-0

Dimensional Information:

Part No	Dimensions		
	A	B	C
2*2P	3.50	10.60	8.50
2*3P	7.00	14.10	12.00
2*4P	10.50	17.60	15.50
2*5P	14.00	21.10	19.00
2*6P	17.50	24.60	22.50
2*7P	21.00	28.10	26.00
2*8P	24.50	31.60	29.50



P.C.B. LAYOUT



GENERAL TOLERANCES

SCALE: 1:1

NAME

DATE

LINEAR

ANGLES

APPROVED

DESIGNER

DRAWN

0.0±0.25

X° REF±6°

肖丽娟

2018.07.28

新图面发行

2018.07.28

UNIT: MM

0.00±0.15

X° ±3°

肖丽娟

2018.07.28

REVISION RECORD

DATE

SIZE: A4

0.000±0.08

X° X'±2°

肖丽娟

2018.07.28

1 2 3 4 5 6 7 8

**深圳市联泰连接器有限公司**  
 SHENZHEN UNITED CABLE CONNECTOR CO., LTD.  
 公司地址: WWW.SZLSTC.COM  
 公司邮箱: SZLSTC@126.COM  
 公司电话: 0755-23765650  
 公司传真: 0755-23765753

TITLE:  
 3.50mm pitch Dual Wafer

PART. NO:  
 43501W0\*-2XNP\*-B2-\*\*

REV: A0  
 ENDE05  
 SHEET: 1/1